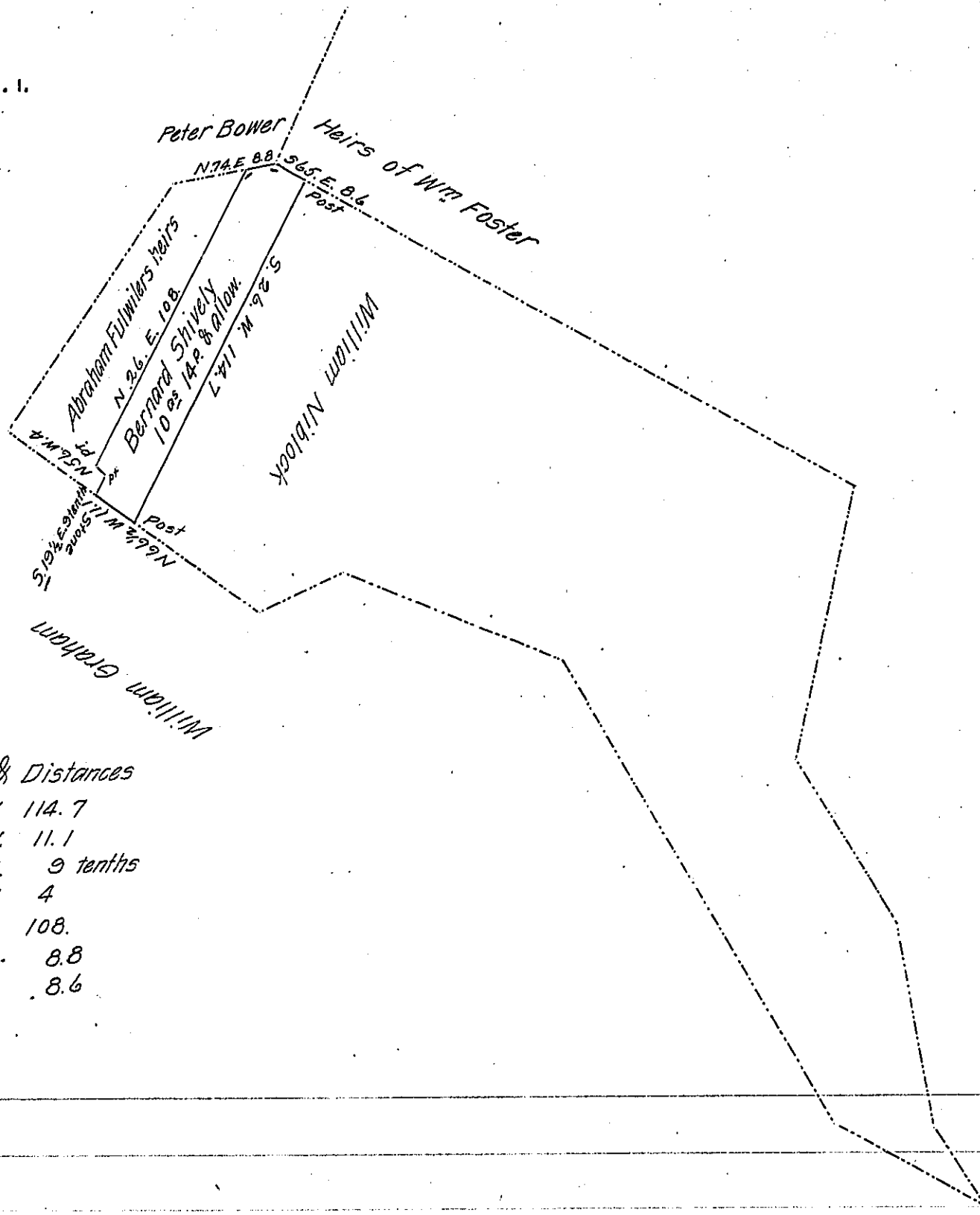


FORM No. 1.



Courses & Distances

- S 26 W 114.7
- N. 66½ W. 11.1
- N 19½ E. 9 tenths
- N 54. W. 4
- N 26 E. 108.
- N. 74. E. 8.8
- S. 65. E. 8.6

Draft of a tract of land Situate in Tyrone Township Perry County Containing Ten Acres Fourteen Perches & allowance of Six Per Cent for roads & C. Part of 162^{ac} 75 P. & Allowance Originally Surveyed on a warrant granted To Thomas Ross dated June (obl.) 2. The above part Surveyed for Bernard Shively the ow(obl.) December the 14th 1839.

John Laporte Esq.

Surveyor General of Pa.

Pr. Wm Wilson D.S.

IN TESTIMONY that the above is a copy of the original remaining on file in the Department of Internal Affairs of Pennsylvania, made conformably to an Act of Assembly approved the 16th day of February, 1833, I have hereunto set my Hand and caused the Seal of said Department to be affixed at Harrisburg, this twelfth day of September 1906.

Laack Brown
 Secretary of Internal Affairs.